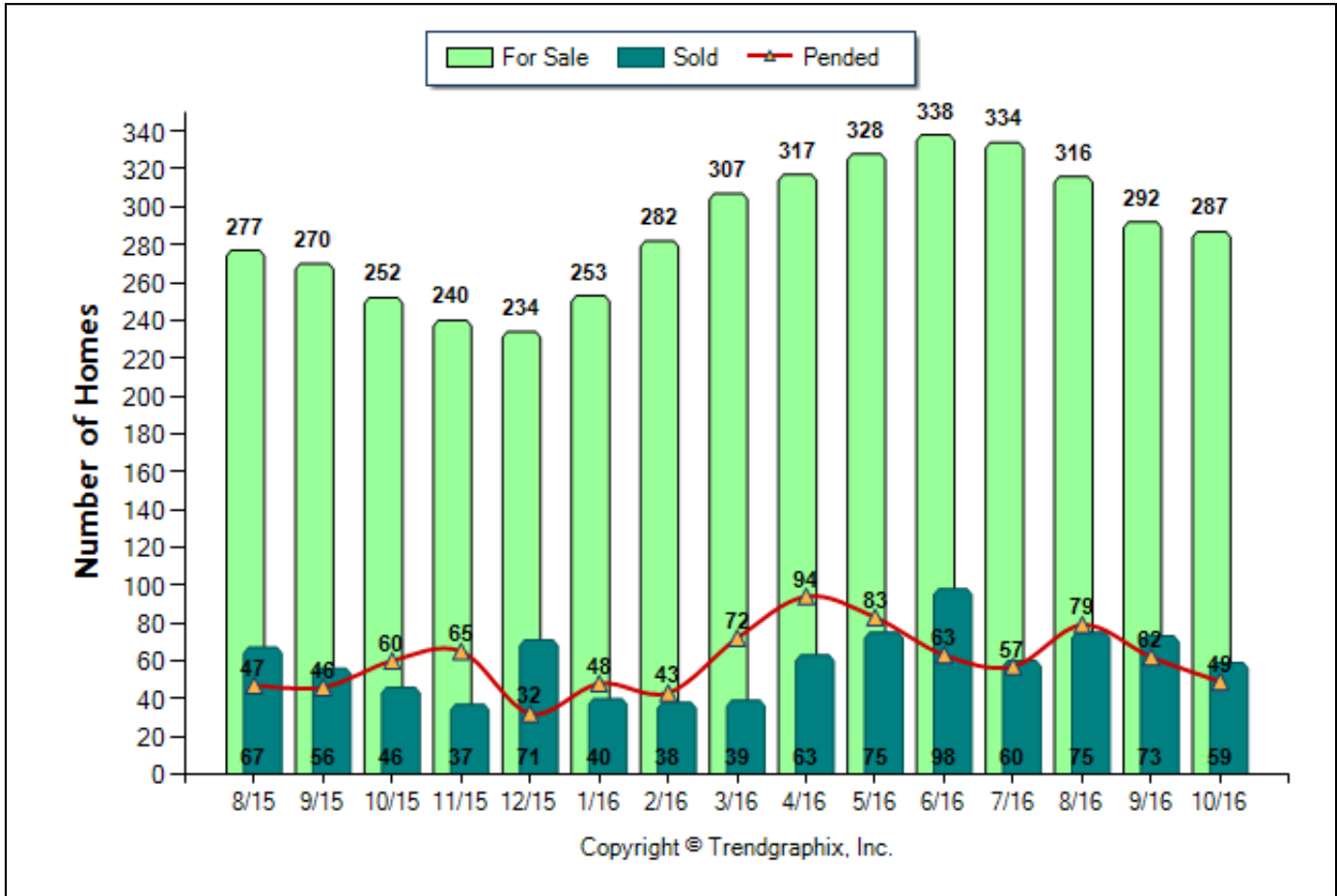




Location: Weston
Property Types: Single Family Homes - All Properties - Non REO, Non Short Sale
Price Range: \$0 - No Limit **SQFT Range:** 0 - No Limit **Bedrooms:** 0 - No Limit
Full Baths: 0 - No Limit **Half Baths:** 0 - No Limit **Year Built:** 0 - No Limit

Number of Homes For Sale vs. Sold vs. Pended (Aug. 2015 - Oct. 2016)

Prepared for you by: athena



	Curnt vs. Prev Month			Curnt vs. Same Month 1 Yr Ago			Curnt vs. Same Qtr 1 Yr Ago			TODAY STATS		
	Oct. 16	Sep. 16	% Change	Oct. 16	Oct. 15	% Change	Aug. 16 to Oct. 16	Aug. 15 to Oct. 15	% Change	11/1/2016 - 11/30/2016	10/1/2016 - 10/30/2016	% Change
For Sale	287	292	-1.7% ▼	287	252	13.9% ▲	895	799	12% ▲	280	285	-1.8% ▼
Sold	59	73	-19.2% ▼	59	46	28.3% ▲	207	169	22.5% ▲	31	45	-31.1% ▼
Pended	49	62	-21% ▼	49	60	-18.3% ▼	190	153	24.2% ▲	39	41	-4.9% ▼

October 2016 is a Neutral market**

Home For Sale in October 2016 is 287 units. It is down **1.7%** compared to the last month and up **13.9%** compared to the last year.
Home Closed in October 2016 is 59 units. It is down **19.2%** compared to the last month and up **28.3%** compared to the last year.
Home Placed under Contract in October 2016 is 49 units. It is down **21%** compared to the last month and down **18.3%** compared to the last year.

**Buyer's market: more than 6 months of inventory based on closed sales. Seller's market: less than 3 months of inventory based on closed sales. Neutral market: 3 - 6 months of inventory based on closed sales.

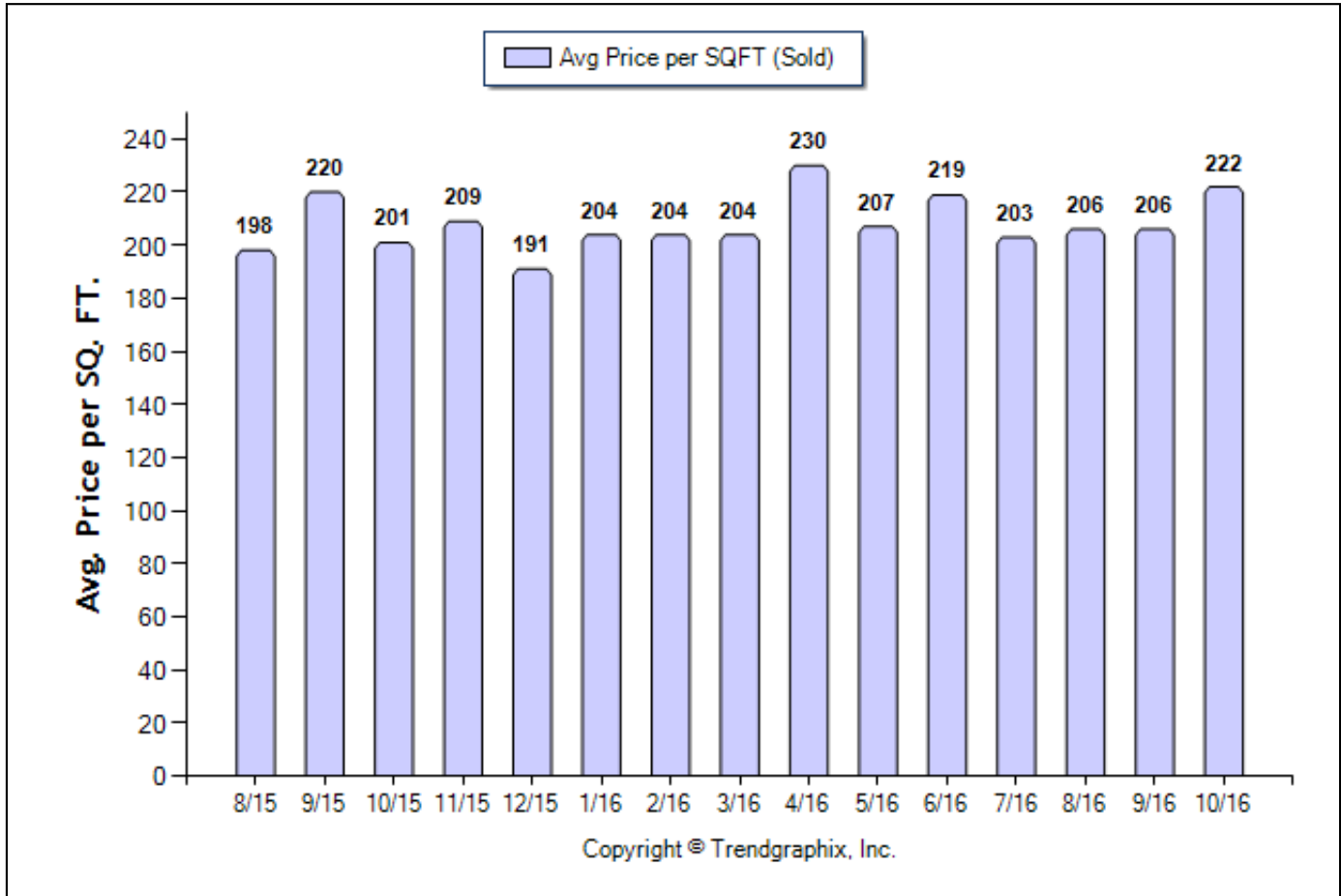
All reports are published November 2016, based on data available at the end of October 2016, except for the today stats. This representation is based in whole or in part on data supplied by the Realtor Association of Miami, the Greater Fort Lauderdale Realtors, or the Southeast Florida Multiple Listing Service (MLS). Neither the Associations nor their MLS guarantees, or are in any way responsible for its accuracy. Data maintained by the Associations or their MLS may not reflect all real estate activity in the market. This statistical information is produced by and for the exclusive use of EWM Realty International. Report reflects activity by all Brokers participating in the MLS.



Location: Weston
Property Types: Single Family Homes - All Properties - Non REO, Non Short Sale
Price Range: \$0 - No Limit **SQFT Range:** 0 - No Limit **Bedrooms:** 0 - No Limit
Full Baths: 0 - No Limit **Half Baths:** 0 - No Limit **Year Built:** 0 - No Limit

Average Price per SQFT (Sold) (Aug. 2015 - Oct. 2016)

Prepared for you by: athena



	Curnt vs. Prev Month			Curnt vs. Same Month 1 Yr Ago			Curnt vs. Same Qtr 1 Yr Ago			TODAY STATS		
	Oct. 16	Sep. 16	% Change	Oct. 16	Oct. 15	% Change	Aug. 16 to Oct. 16	Aug. 15 to Oct. 15	% Change	11/1/2016 - 11/30/2016	10/1/2016 - 10/30/2016	% Change
Avg. Sq. Ft. Price (Sold)	222	206	7.8% ▲	222	201	10.4% ▲	210.56	206.11	2.2% ▲	198	225	-12% ▼

October 2016 Average Sold Price per Square Footage is Neutral**

Average Sold Price per Square Footage in October 2016 is \$222. It is up **7.8%** compared to the last month and up **10.4%** compared to the last year.

**Based on 6 month trend - Appreciating/Depreciating/Neutral.

All reports are published November 2016, based on data available at the end of October 2016, except for the today stats. This representation is based in whole or in part on data supplied by the Realtor Association of Miami, the Greater Fort Lauderdale Realtors, or the Southeast Florida Multiple Listing Service (MLS). Neither the Associations nor their MLS guarantees, or are in any way responsible for its accuracy. Data maintained by the Associations or their MLS may not reflect all real estate activity in the market. This statistical information is produced by and for the exclusive use of EWM Realty International. Report reflects activity by all Brokers participating in the MLS.



Location: Weston

Property Types: Single Family Homes - All Properties - Non REO, Non Short Sale

Price Range: \$0 - No Limit

SQFT Range: 0 - No Limit

Bedrooms: 0 - No Limit

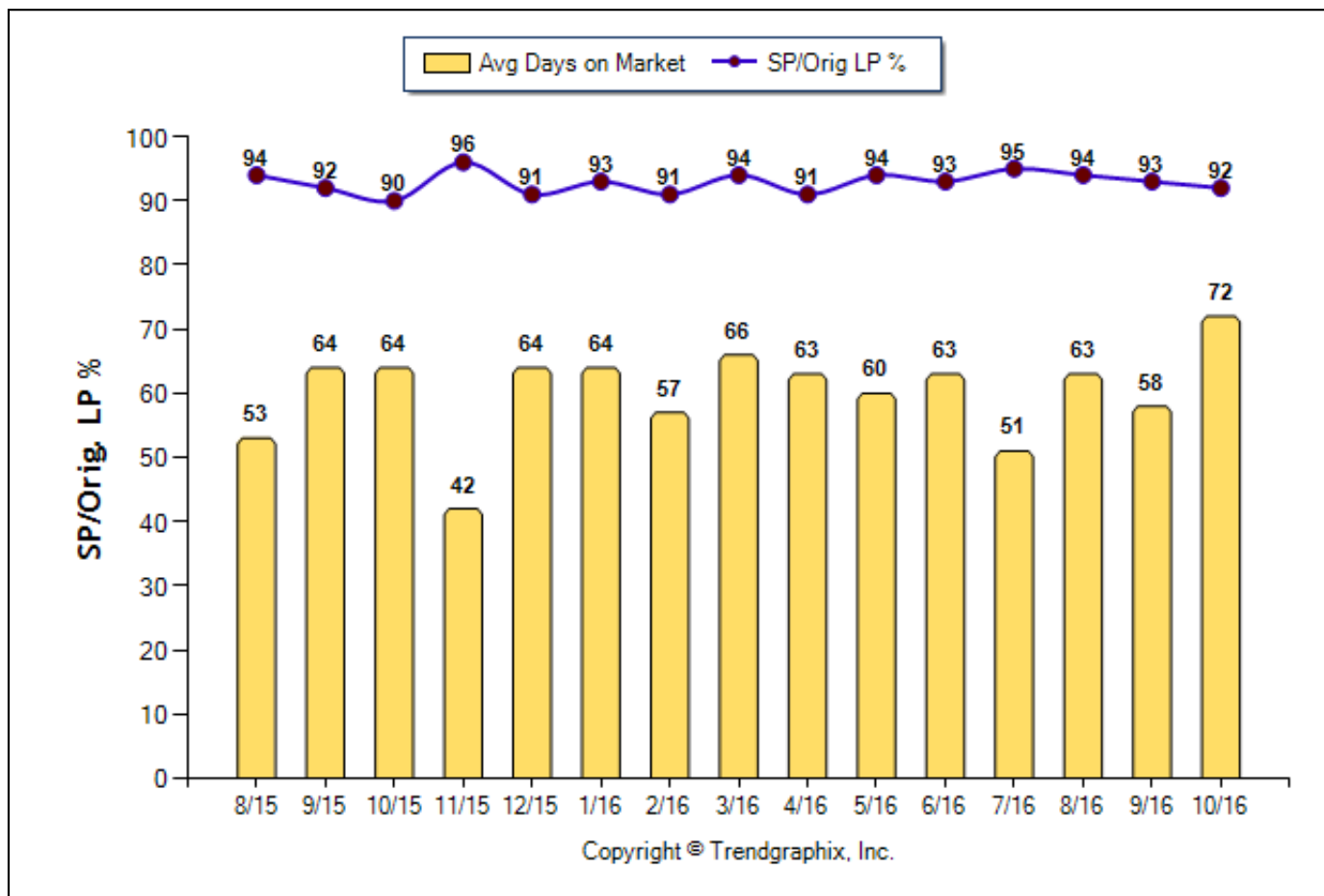
Full Baths: 0 - No Limit

Half Baths: 0 - No Limit

Year Built: 0 - No Limit

Avg Days On Market & SP/Orig LP % (Aug. 2015 - Oct. 2016)

Prepared for you by: athena



Copyright © Trendgraphix, Inc.

	Curnt vs. Prev Month			Curnt vs. Same Month 1 Yr Ago			Curnt vs. Same Qtr 1 Yr Ago			TODAY STATS		
	Oct. 16	Sep. 16	% Change	Oct. 16	Oct. 15	% Change	Aug. 16 to Oct. 16	Aug. 15 to Oct. 15	% Change	11/1/2016 - 11/30/2016	10/1/2016 - 10/30/2016	% Change
Days on Market	72	58	24.1% ▲	72	64	12.5% ▲	64	60	6.7% ▲	71	69	2.9% ▲
Sold/Orig LP Diff. %	92	93	-1.1% ▼	92	90	2.2% ▲	93	92	1.1% ▲	89	91	-2.2% ▼

October 2016 Average Days on Market trend is Rising**

Average Days on Market in October 2016 is 72. It is up 24.1% compared to the last month and up 12.5% compared to the last year.

October 2016 Sold/Original List Price Ratio is Falling**

Sold/Original List Price % in October 2016 is 92%. It is down 1.1% compared to the last month and up 2.2% compared to the last year.

**Based on 6 month trend - Rising/Falling/Remains Steady.

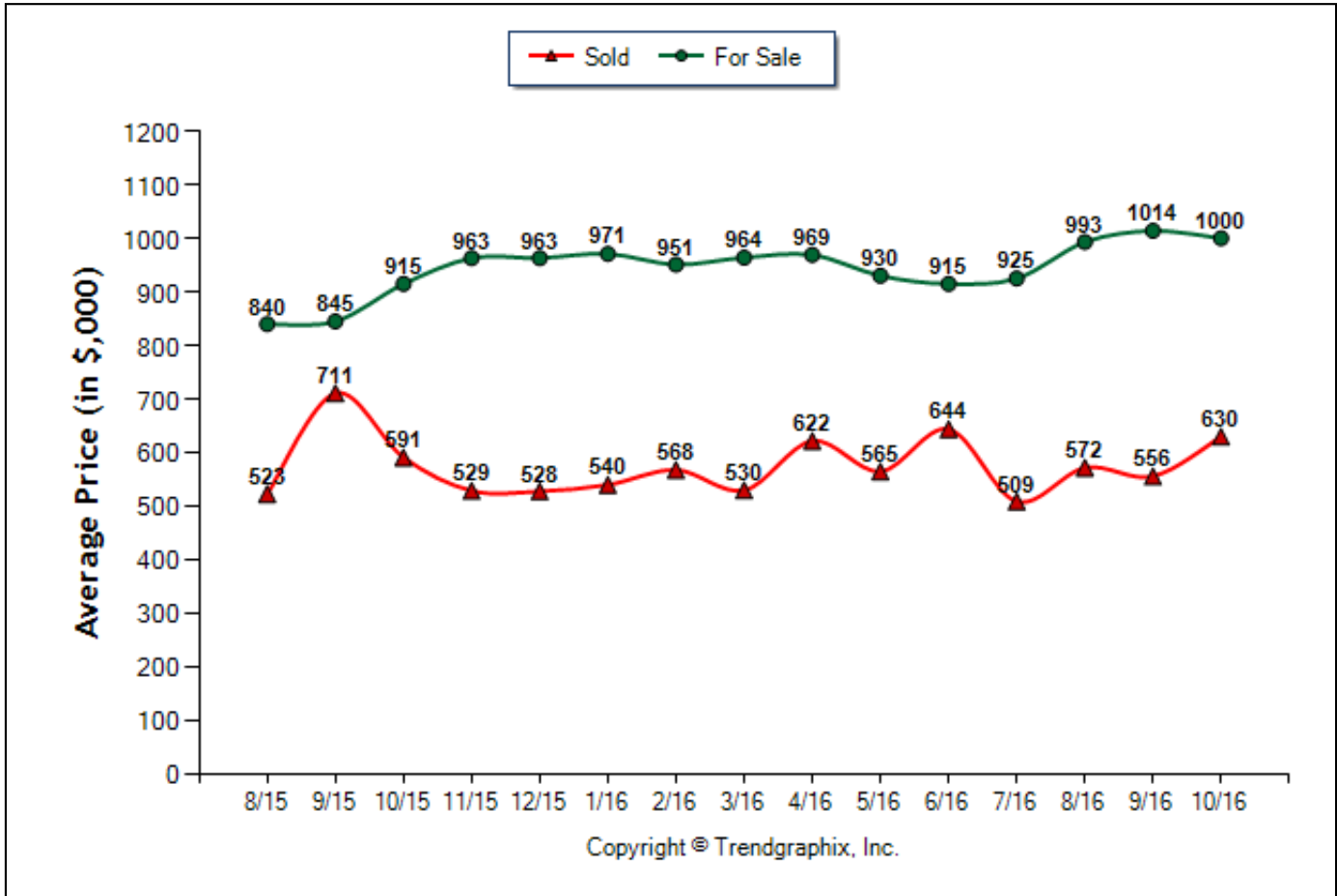
All reports are published November 2016, based on data available at the end of October 2016, except for the today stats. This representation is based in whole or in part on data supplied by the Realtor Association of Miami, the Greater Fort Lauderdale Realtors, or the Southeast Florida Multiple Listing Service (MLS). Neither the Associations nor their MLS guarantees, or are in any way responsible for its accuracy. Data maintained by the Associations or their MLS may not reflect all real estate activity in the market. This statistical information is produced by and for the exclusive use of EWM Realty International. Report reflects activity by all Brokers participating in the MLS.



Location: Weston
Property Types: Single Family Homes - All Properties - Non REO, Non Short Sale
Price Range: \$0 - No Limit **SQFT Range:** 0 - No Limit **Bedrooms:** 0 - No Limit
Full Baths: 0 - No Limit **Half Baths:** 0 - No Limit **Year Built:** 0 - No Limit

Average Price of For Sale and Sold (Aug. 2015 - Oct. 2016)

Prepared for you by: athena



	Curnt vs. Prev Month			Curnt vs. Same Month 1 Yr Ago			Curnt vs. Same Qtr 1 Yr Ago			TODAY STATS		
	Oct. 16	Sep. 16	% Change	Oct. 16	Oct. 15	% Change	Aug. 16 to Oct. 16	Aug. 15 to Oct. 15	% Change	11/1/2016 - 11/30/2016	10/1/2016 - 10/30/2016	% Change
Avg. Active Price	1000	1014	-1.4% ▼	1000	915	9.3% ▲	1002	865	15.8% ▲	996	1007	-1.1% ▼
Avg. Sold Price	630	556	13.3% ▲	630	591	6.6% ▲	583	604	-3.5% ▼	525	663	-20.8% ▼

October 2016 Average For Sale Price is Neutral**

Average For Sale Price (in thousand) in October 2016 is \$1000. It is down **1.4%** compared to the last month and up **9.3%** compared to the last year.

October 2016 Average Sold Price is Neutral**

Average Sold Price (in thousand) in October 2016 is \$630. It is up **13.3%** compared to the last month and up **6.6%** compared to the last year.

**Based on 6 month trend - Appreciating/Depreciating/Neutral.

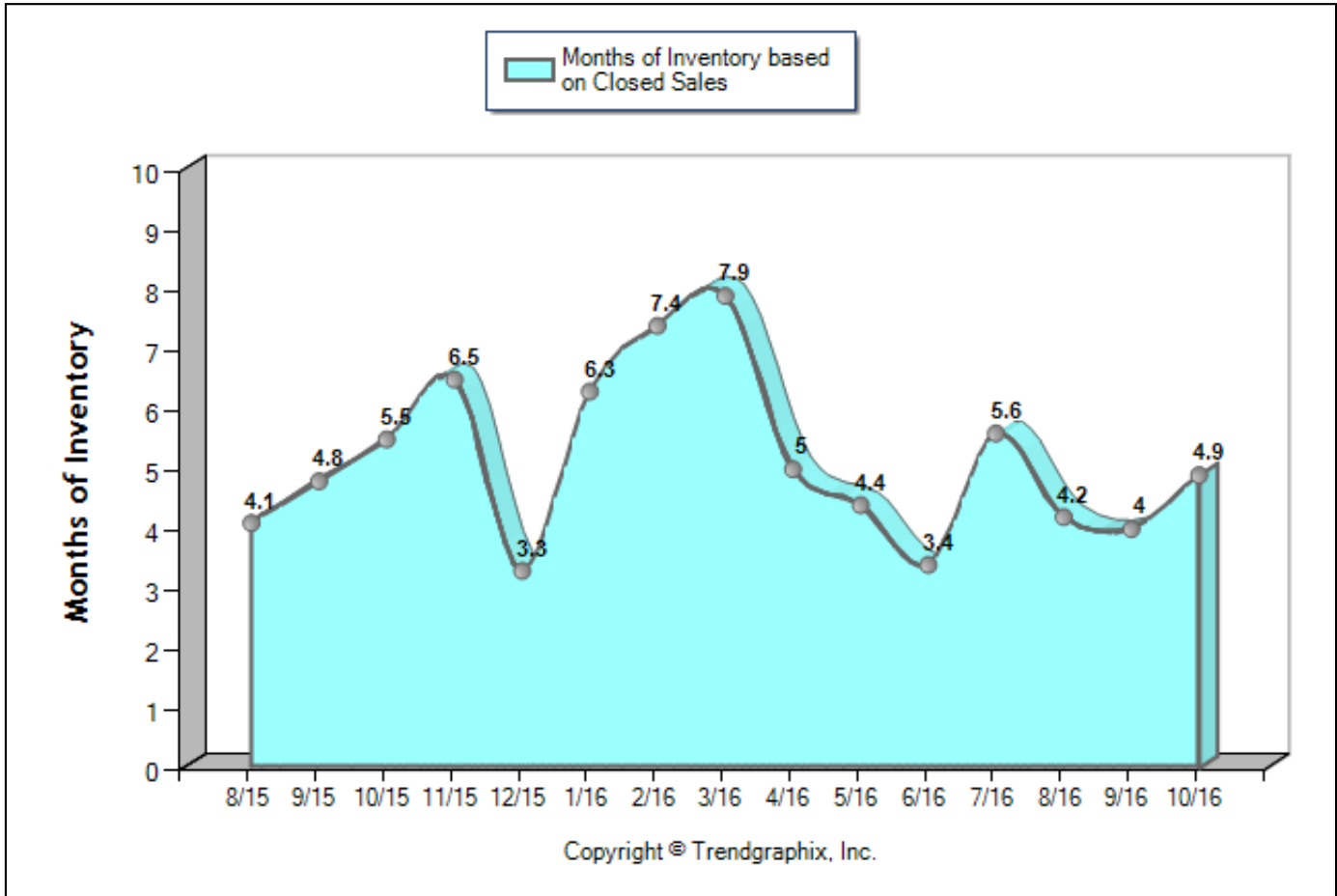
All reports are published November 2016, based on data available at the end of October 2016, except for the today stats. This representation is based in whole or in part on data supplied by the Realtor Association of Miami, the Greater Fort Lauderdale Realtors, or the Southeast Florida Multiple Listing Service (MLS). Neither the Associations nor their MLS guarantees, or are in any way responsible for its accuracy. Data maintained by the Associations or their MLS may not reflect all real estate activity in the market. This statistical information is produced by and for the exclusive use of EWM Realty International. Report reflects activity by all Brokers participating in the MLS.



Location: Weston
Property Types: Single Family Homes - All Properties - Non REO, Non Short Sale
Price Range: \$0 - No Limit **SQFT Range:** 0 - No Limit **Bedrooms:** 0 - No Limit
Full Baths: 0 - No Limit **Half Baths:** 0 - No Limit **Year Built:** 0 - No Limit

Months of Inventory Based on Closed Sales (Aug. 2015 - Oct. 2016)

Prepared for you by: athena



	Curnt vs. Prev Month			Curnt vs. Same Month 1 Yr Ago			Curnt vs. Same Qtr 1 Yr Ago			TODAY STATS		
	Oct. 16	Sep. 16	% Change	Oct. 16	Oct. 15	% Change	Aug. 16 to Oct. 16	Aug. 15 to Oct. 15	% Change	11/1/2016 - 11/30/2016	10/1/2016 - 10/30/2016	% Change
Months of Inventory (Closed Sales)	4.9	4	22.5% ▲	4.9	5.5	-11% ▼	4.3	4.7	-8.5% ▼	9	6.3	42.6% ▲

October 2016 is a Neutral market**

Months of Inventory based on Closed Sales in October 2016 is 4.9. It is up **22.5%** compared to the last month and down **11%** compared to the last year.

**Buyer's market: more than 6 months of inventory based on closed sales. Seller's market: less than 3 months of inventory based on closed sales. Neutral market: 3 - 6 months of inventory based on closed sales.

All reports are published November 2016, based on data available at the end of October 2016, except for the today stats. This representation is based in whole or in part on data supplied by the Realtor Association of Miami, the Greater Fort Lauderdale Realtors, or the Southeast Florida Multiple Listing Service (MLS). Neither the Associations nor their MLS guarantees, or are in any way responsible for its accuracy. Data maintained by the Associations or their MLS may not reflect all real estate activity in the market. This statistical information is produced by and for the exclusive use of EWM Realty International. Report reflects activity by all Brokers participating in the MLS.

*Facts and Trends*TM - Published November 2016*

Location: Weston

Property Types: Single Family Homes - All Properties - Non REO, Non Short Sale

Price Range: \$0 - No Limit

SQFT Range: 0 - No Limit

Bedrooms: 0 - No Limit

Full Baths: 0 - No Limit

Half Baths: 0 - No Limit

Year Built: 0 - No Limit



Date	8/15	9/15	10/15	11/15	12/15	1/16	2/16	3/16	4/16	5/16	6/16	7/16	8/16	9/16	10/16
For Sale	277	270	252	240	234	253	282	307	317	328	338	334	316	292	287
New Listing	91	91	96	83	54	97	106	122	139	127	131	125	93	70	75
Sold	67	56	46	37	71	40	38	39	63	75	98	60	75	73	59
Pended	47	46	60	65	32	48	43	72	94	83	63	57	79	62	49
Months of Inventory (Closed Sales)	4.1	4.8	5.5	6.5	3.3	6.3	7.4	7.9	5	4.4	3.4	5.6	4.2	4	4.9
Months of Inventory (Pended Sales)	5.9	5.9	4.2	3.7	7.3	5.3	6.6	4.3	3.4	4	5.4	5.9	4	4.7	5.9
Absorption Rate (Closed Sales) %	24.2	20.7	18.3	15.4	30.3	15.8	13.5	12.7	19.9	22.9	29	18	23.7	25	20.6
Absorption Rate (Pended Sales) %	17	17	23.8	27.1	13.7	19	15.2	23.5	29.7	25.3	18.6	17.1	25	21.2	17.1
Avg. Active Price	840	845	915	963	963	971	951	964	969	930	915	925	993	1014	1000
Avg. Sold Price	523	711	591	529	528	540	568	530	622	565	644	509	572	556	630
Avg. Sq. Ft. Price (Sold)	198	220	201	209	191	204	204	204	230	207	219	203	206	206	222
Sold/List Diff. %	96	94	95	97	96	95	95	95	94	96	95	97	97	95	96
Sold/Orig LP Diff. %	94	92	90	96	91	93	91	94	91	94	93	95	94	93	92
Days on Market	53	64	64	42	64	64	57	66	63	60	63	51	63	58	72
Median	485	528	475	465	490	495	495	450	505	495	525	478	535	468	517

All reports are published November 2016, based on data available at the end of October 2016, except for the today stats. This representation is based in whole or in part on data supplied by the Realtor Association of Miami, the Greater Fort Lauderdale Realtors, or the Southeast Florida Multiple Listing Service (MLS). Neither the Associations nor their MLS guarantees, or are in any way responsible for its accuracy. Data maintained by the Associations or their MLS may not reflect all real estate activity in the market. This statistical information is produced by and for the exclusive use of EWM Realty International. Report reflects activity by all Brokers participating in the MLS.